

**BAXI**



**ECO3**

**SPARE PARTS CATALOGUE**

**- October 2015 -**



# HOW TO READ THE SPARE PARTS CATALOGUE

In the spare part catalogue, after the exploded diagrams, there are the components lists of the boilers; this is the meaning of the different columns:

Pos. Identification number of the component in the exploded diagram of the boiler.

Description Short description of the component.

Code BAXI S.p.A. code of the component.

Tab. XX XX is the exploded diagram number of the boiler taken into consideration.

From serial number Date (year and week) identifying the beginning of production of a component (taken from the serial number of the boiler).  
e.g. 1201: year 2012 (1 identifies the decade 2010-2019; 2 identifies the year) – 01th week.  
If the box is empty, the component is in use from the beginning of production of the boiler.

To serial number Date (year and week) identifying the end of production of a component (taken from the serial number of the boiler).  
e.g. 1225: year 2012 (1 identifies the decade 2010-2019; 2 identifies the year) – 25th week.  
If the box is empty, the component is still in use.

Interchangeable It identifies the interchangeability between the new component and the old one.  
YES: components are interchangeable.  
NO: components are not interchangeable.

## TABELLA COLLEGAMENTO CODICE CALDAIA - ESPLOSO TABLEAU CONNECTION CODEX CHAUDIERE - VUE ECLATEE BOILERS CONNECTION BOARD - EXPLODED VIEW

<b>BOILER CODE</b>	<b>BOILER DESCRIPTION</b>	<b>EXPLODED REF.</b>
<b>CODICE CALDAIA</b>	<b>DESCRIZIONE CALDAIA</b>	<b>RIF. ESPLOSO</b>
<b>CODIGO CALDERA</b>	<b>DESCRIPCION CALDERA</b>	<b>REF. EXPLOSIONADO</b>
<b>CODE CHAUDIÈRE</b>	<b>DESCRIPTION CHAUDIÈRE</b>	<b>RÉF. EXPLOSÉE</b>
CSB455243681	ECO3 1.240 FI	Tab 599
CSB456243685	ECO3 240 FI	Tab 589
CSB456283685	ECO3 280 FI	Tab 589



Pos	Code	Description code	CSB456233685			To serial number	From serial number	Interchangeable:
			1.240 FI	240 FI	280 FI			
1	5683090	SUPPORT FRAME	•	•	•			
2	5681390	LEFT PANEL	•	•	•			
3	5681380	RIGHT PANEL	•	•	•			
4	5116350	FRONTAL PANEL ECO3	•	•	•			
5	5110290	BRACKET-UPPER SUPPORT	•	•	•			
6	5109640	BRACKET-LOWER SUPPORT	•	•	•			
8	5408080	PRESSURE SWITCH PIPE L=270	•	•	•			
9	5108700	RESTRICTOR-AIR INTAKE	•	•	•			
10	5207060	FLUE ADAPTOR	•	•	•			
11	5407890	GASKET ADAPTOR	•	•	•			
12	5108690	PLATE BLANKING	•	•	•			
13	5407400	SUCTION CAP GASKET	•	•	•			
15	600530	JOINT ASSEMBLY	•	•	•			
17	5213750	CONVEYOR BEND LUNA3	•	•	•			
18	5407050	PRESSURE SENSING VENTURI	•	•				
18	5413850	PRESS.SENS.VENTURI SINGLE TAP			•			
21	5402050	WASHER-SEALING	•	•	•			
22	5653850	FAN - 80	•	•				
22	5655730	FAN - 105			•			
23	628610	PRESS.SWITCH ASS. 0,68mbar HONEYW			•			
23	628640	PRESS.SWITCH ASS.1.2mbar HONEYW.	•	•				
23	721890300	FLUE PRESS.SWITCH 70-60Pa HUBA			•			
23	721890800	FLUE PRES.SWITCH 95-115Pa HUBA	•	•				
24	5414320	PIPE-VALVE COMPENS.4,5x8 L=170	•	•	•			
25	5681090	CONVEYOR ASSEMBLY LUNA3	•	•	•			
27	5680950	COMBUSTION CHAMBER ASS. 31KW			•			
27	5681180	COMBUSTION CHAMBER ASS. 24Kw	•	•				
28	5213190	INSULATING PANEL	•	•	•			
29	5213290	INSULATION - REAR PANEL	•	•	•			
30	5213340	INSULATING PANEL	•	•	•			
31	5111840	PANEL-COMBUSTION CHAMBER 80	•	•				
31	5111850	PANEL-COMB CHAMBER-105			•			
32	620860	H2O/GAS EXCHANGER 24KW+CLIP	•	•				
32	5680990	EXCHANGER ASS. CLIP 31KW			•			
32	5681190	HEATING EXCHANGER H2O/GAS 24Kw	•	•				
33	710963000	OR 21,5X3 EP70 TFL	•	•	•			
34	5113650	PRIMARY EXCHANGER FIXING CLIP	•	•	•			
35	5625570	VESSEL EXPANSION - 8L	•	•				
35	5690740	EXPANSION VESSEL 10 L			•			
36	5653290	PIPE - EXPANSION VESSEL			•			
37	5653710	PANEL COMBUSTION BOX FRONT 80	•	•				
37	5655750	PANEL-COMBUSTION BOX			•			



Pos	Code	Description code	CSB450233685			To serial number	From serial number	Intercha ngeable:
			cbh45243681 1.240 FI	cbh450243685 240 FI	280 FI			
38	5401610	VIEWING WINDOW GASKET	•	•	•			
39	5203930	VIEWING WINDOW	•	•	•			
40	5103360	SURROUND - VIEWING WINDOW	•					
40	5115590	SURROUND-SIGHT GLASS		•	•			
41	5653300	BURNER ASSEMBLY (15 ELEMENTS)	•	•	•			
42	5604090	BURNER ELEMENT	•	•	•			
43	606140	MANIFOLD - BURNER	•	•				
43	5680970	GAS RAMP WITH INJECT. (D.1,28)			•			
44	601520	INJECTOR KIT D. 0,74	•	•				
44	608430	TRANSFORM. KIT N.G. (15x1,28)			•			
44	608440	TRANSFORM. KIT N.G. (18x1,18)	•	•				
44	608450	TRANSFORM.KIT LPG(15x 0,77)			•			
45	5407940	GASKET-BURNER MANIFOLD	•	•	•			
46	5657180	ADAPTOR-MANIFOLD	•	•	•			
47	5407810	GASKET-MANIFOLD ADAPTOR	•	•	•			
49	5207070	FLUE SAMPLE PLUG	•	•	•			
59	8419050	LEAD - IGNITION ELECTRODE	•	•	•			
61	5407830	INSULATION BOOT - ELECTRODE	•	•	•			
62	5409570	SEALED CHAMBER HOSE ADAPTER	•	•	•			
63	8422570	ELECTRODE - IGNITION	•	•	•			
70	711192200	PUMP/EXCHANGER PIPE ASSEMBLY	•	•	•			
72	722175500	PUMP UP 15-50 AO GRUND.NO CE	•	•				
72	722275800	PUMP UP 15-60 AO GRUND.NO CE			•			
73	607290	AUTOMATIC AIR VENT	•	•	•			
74	5406360	O-RING 14X1,78 EP	•	•	•			
75	5404670	GROMMET - PIPE ASSEMBLY	•	•	•			
76	711612600	DHW PLATE EXCHANGER 10 PLATES		•				
76	711613000	DHW PLATE EXCHANGER 14 PLATES			•			
77	711613500	DHW PLATE EXCHANGER OR		•	•			
80	5655650	HYDRAULIC INLET ASSY	•					
80	711607500	HYDRAULIC INLET GROUP		•	•			
81	619050	FILTER RESTRICTOR GROUP		•	•			
87	711652300	PUMP CONNECTING ELEMENT/OR		•	•			
90	611930	FILLING GROUP		•	•			
91	5652030	DRAINING TAP	•	•	•			
92	9951170	SAFETY VALVE 3 BAR	•					
92	710109400	HYDRAULIC SAFETY VALVE 3 BAR		•	•			
98	5676330	BY-PASS PIPE ASSY-SYSTEM	•					
99	8380850	FIXING CLIP	•					
102	5677030	HEATING/BY PASS ASS. 15.0479	•					
102	711606100	3 WAY VALVE ASSEMBLY		•	•			
113	617100	BY-PASS GR.	•					
120	711356900	3 WAY VALVE CARTRIDGE		•	•			

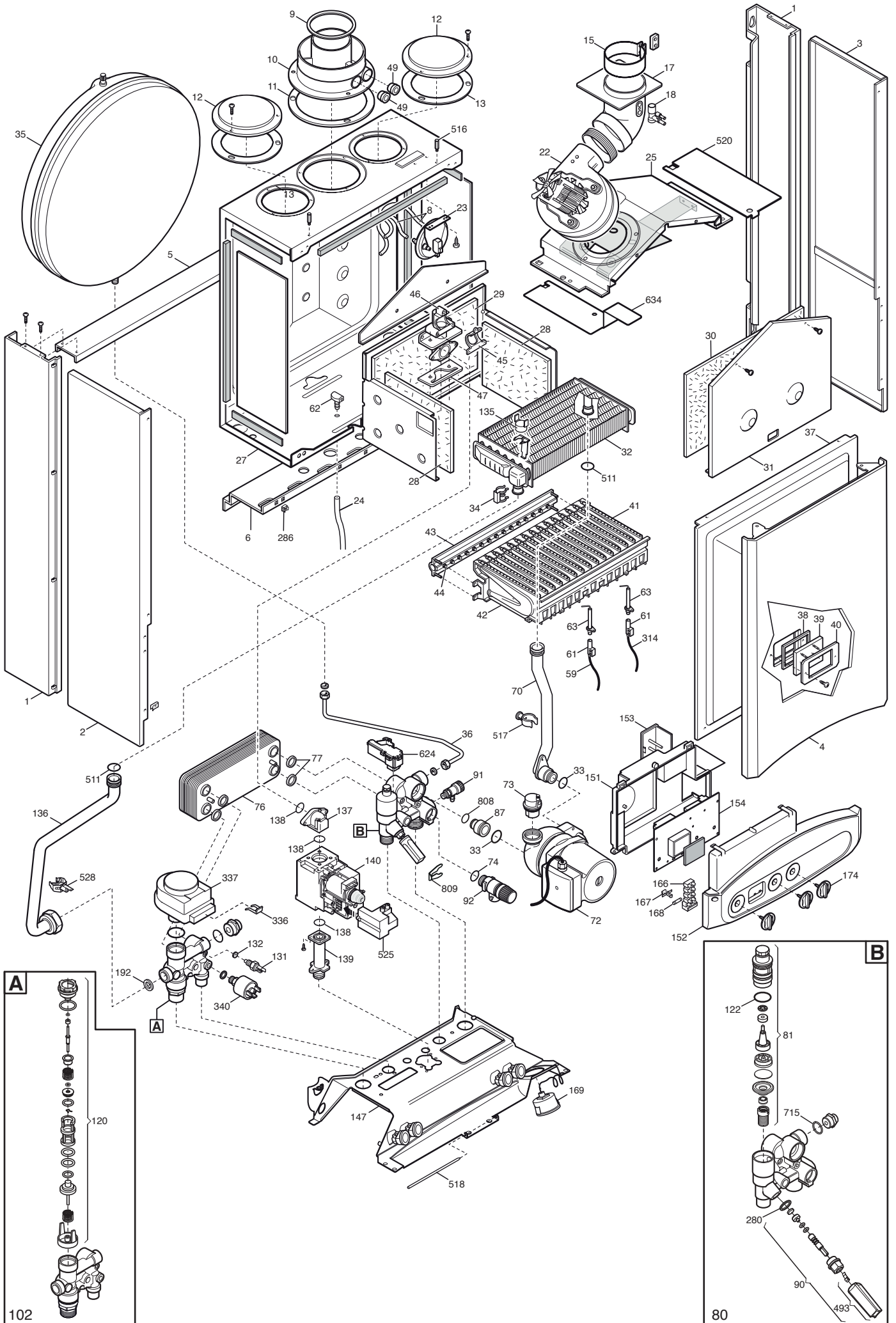


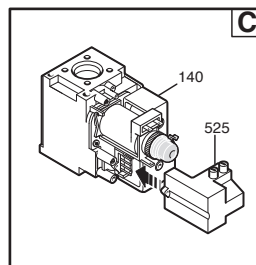
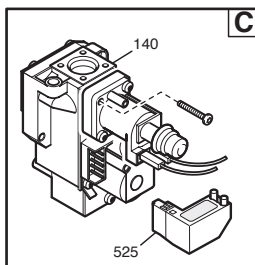
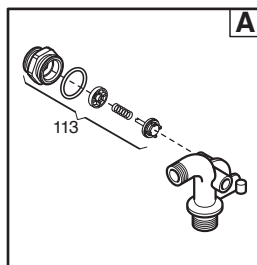
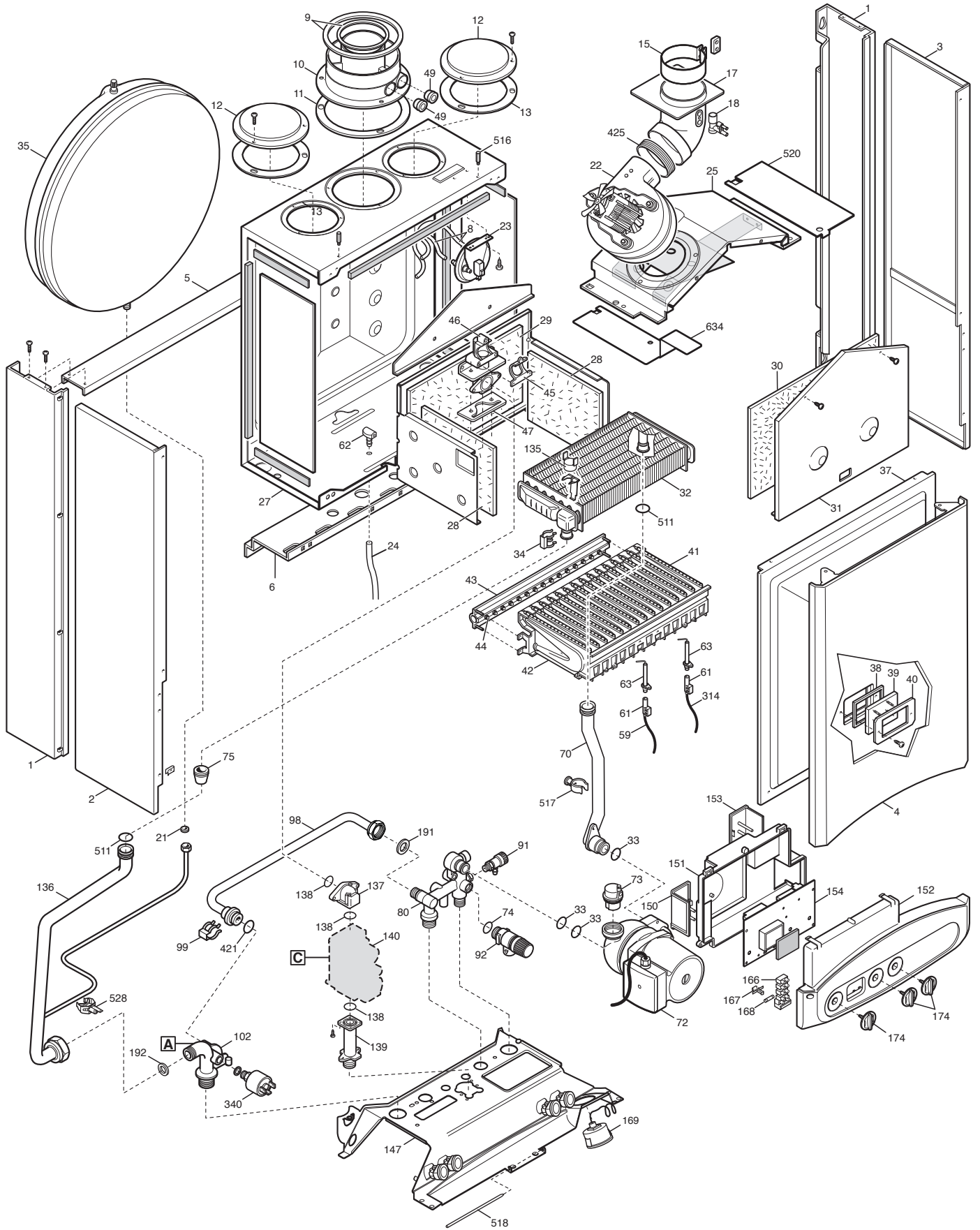
Pos	Code	Description code				To serial number	From serial number	Intercha ngeable:
			CSB450233685 280 FI	CSB450233685 240 FI	CSB452343681 1.240 FI			
122	5405370	O-RING		•	•			
131	8434820	TEMPERATURE SENSOR		•	•			
132	5402830	WASHER - SENSOR SEALING		•	•			
135	9951610	LIMIT THERMOSTAT 105°C	•	•	•			
136	5691850	PIPE ASSEMBLY MR/BY PASS	•					
136	711192100	3WV/EXCHANGER PIPE ASSEMBLY		•	•			
137	5210700	ELBOW - GAS FLOW OUTLET	•	•	•			
138	5402010	O RING 22.22x2.62	•	•	•			
139	5210630	CONNECTOR - GAS VALVE INLET	•	•	•			
140	5653610	GAS VALVE - SIGMA 845048	•	•	•			
140	5665220	GAS VALVE HON.	•	•	•			
147	5680910	SUPPORT FRAME		•	•			
147	5683010	CONNECTION TRAVERSE	•					
151	5412240	BOX COVER PARADIGM	•	•	•			
152	5683640	PRINT CONTROL PANEL ECO3 BAXI	•	•	•			
153	5407660	PANEL - ACCESS	•	•	•			
154	5683130	PCB B&P WITH DISP. ECO3 90°	•	•	•			
154	5686920	PCB HON.ECO3 SM11454	•	•	•			
166	8421590	TERMINAL BLOCK	•	•	•			
167	5405340	FUSE HOLDER	•	•	•			
168	9950580	FUSE	•	•	•			
169	9951650	MANOMETER D.40	•	•	•			
174	5412700	KNOB FALKE	•	•	•			
192	5404650	SEALING WASHER G 3/4	•	•	•			
280	5207730	GASKET 14,2X18X1,5		•	•			
286	8240530	NUT M5	•	•	•			
314	8418870	LEAD - SENSING ELECTRODE	•	•	•			
336	8380680	CLIP-RETAINING		•	•			
337	5694580	3 WAY VALVE MOTOR		•	•			
340	9951690	PRESSURE SWITCH	•	•	•			
421	5408270	O-RING 11,91 X 2,62 NBR	•					
423	5210410	GAS VALVE CONNECTOR	•					
493	612130	FILLING KNOB ASSEMBLY		•	•			
496	400020	O-RING		•	•			
511	5404600	O.R. 17,86x2,62	•	•	•			
516	5210670	STUD-FRONT PANEL	•	•	•			
517	5407840	CLIP-PLASTIC	•	•	•			
518	5107180	PIN-HINGED FACIA PANEL 28/28I	•	•	•			
520	5112050	AIR DEFLECTOR	•	•	•			
525	8419060	IGNITION UNIT - NAC	•	•	•			
525	8510910	CABLE-GAS VALVE/IGNITER	•	•	•			
525	8511560	SAC IGNITOR L 600	•	•	•			
528	8435360	NTC SENSOR (ITS)	•	•	•			











**BAXI**

**BAXI S.p.A.**  
**Via Trozzetti, 20**  
**36061 BASSANO DEL GRAPPA (VI)**  
**ITALY**  
**Tel. +390424517111**  
**Telefax +390424517379**  
**E-mail. [service@baxi.it](mailto:service@baxi.it)**